

## TECHNICAL EXPERTISE DN 18 BAIJA MARE – SIGHETU MARMATIEI, PART B KM 15 + 000 – 38 + 104 AND PART E KM 52 + 202 – 62 + 234

### Goal of the project

The project aims at drawing up a technical expert report and providing technical consultancy services in relation to the road pavement and the culverts on the mentioned sections of the national road DN 18 with a view to proposing a new road pavement solution

### Short description of the project

The contract involves the elaboration and delivery of the Technical Expert Report, including investigations on site, technical consultancy, typical profiles and all necessary supporting documents; it implies sustaining the technical expert report in front of the Beneficiary's Technical Economical Committee.

### Project implemented by

The project will be implemented by C.N.A.D.N.R. Bucuresti – D.R.D.P. Cluj for changing the solution proposed in the initial project.

### Implementation period

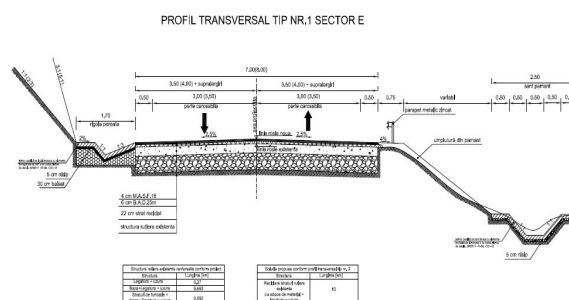
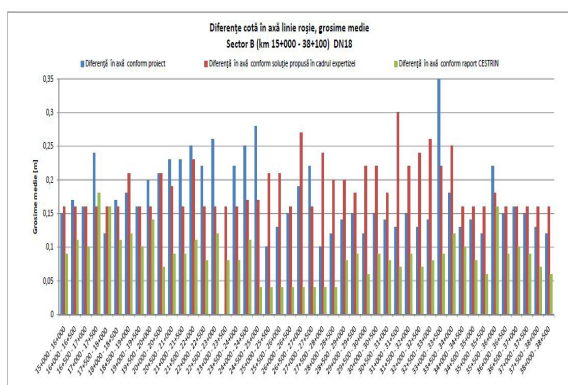
2014-2015

### Main activities

Multidisciplinary activity domain, comprising chapters of investigation concerning the degradation condition, of comparative calculations concerning the dimensioning of the proposed road pavement versus the newly proposed solution and engineering structures.

### Results

By applying the results offered by the Technical Examination Report the newly proposed technical solution was accepted and will be implemented.



### Applicability and transferability of the results

Based on the solutions offered by the Technical Expert Report, the newly proposed design solution is much more efficient due to the reduced time and cost of execution.

### Financed through/by

C.N.A.D.N.R. Bucuresti - D.R.D.P. Cluj

### Research Centre

Research Centre of Infrastructures for Constructions and Transportation -ICT-

### Research team

Prof. Gheorghe Lucaci, PhD  
Prof. Florin Belc, PhD  
Assoc. Prof. Adrian Bota, PhD  
Assist. Prof. Paul Marc, PhD  
Alin Buzurui, PhD Student

### Contact information

Prof. Gheorghe LUCACI, PhD/ Prof. Florin BELC, PhD  
Department of Overland Communication Ways, Foundations and Cadastral Survey  
Adress: Ioan Curea Street, No. 1, RO300224 Timisoara  
Phone: (+40) 256 403 963/ (+40)256 403 965  
E-mail: gheorghe.lucaci@upt.ro/ florin.belc@upt.ro  
<http://www.ct.upt.ro/cctfc/index.htm>